

Endoscopy Final Rinse Retrofit Capsule

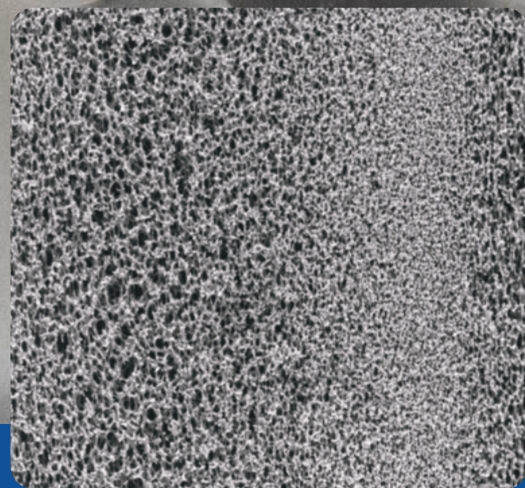


 **SPECTRUM**

FDA
Compliant Materials

PED
Compliant
Article 4, Paragraph 3
Group 2 Liquids

WRAS
APPROVED MATERIAL



Premier Pleat RinseCap Polyethersulfone PPES RinseCap

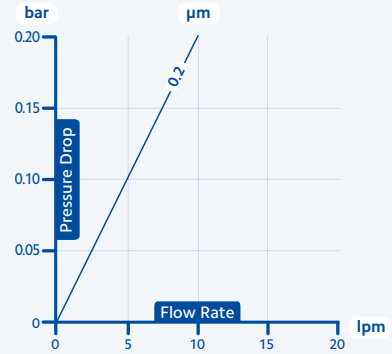
The PPES RinseCap has been specifically designed as an aftermarket retrofit capsule for a range of endoscopy washers, using absolute rated polyethersulfone media to ensure effective microorganism control. Manufactured to exacting standards, in a ISO clean room environment, the RinseCap delivers outstanding performance and reliability, essential in a medical environment.



Key Features

- 99.99999% (Log 7) bacteria retention (Brevundimonas diminuta)
- High Surface area - approximately 15% higher than alternative capsules
- Embossed with full product information to ensure complete traceability

Flow Rate



Materials of Construction

Filter Media
Polyethersulfone

Core & Cage
High Temperature Polypropylene

Support Media
Polypropylene

Capsule
High Temperature Polypropylene

Configurations

Micron (μm)

0.2

Length (")

Media = 6

Specification

Efficiency
99.99999%

Max. Operating Temperature
82°C

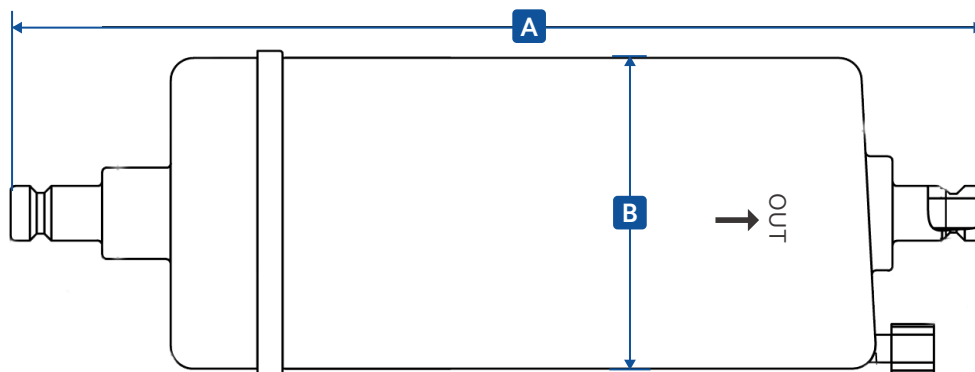
Max. Sterilising Cycles
25 x 15 min cycles at 85°C (Hot Water)
25 x 18 min cycles at 134°C (Steam)

Surface Area
0.24m²

Max. Operating Pressure
4 bar @ 21°C



Dimensions & Packaging



	Dimensions (mm)	
	A	B
PPES-0.2-6-W1	213	71

Part Number

Code	Micron	Length	Fitting
PPES	0.2	6	W1 = Walther KL quick connect coupling

i.e. PPES-0.2-6-W1

